

# THE IMPACT BY THE NUMBERS

To learn more about the impact of the programs below, visit [www.feednc.org](http://www.feednc.org)

## ABOUT OUR MEMBERS

Served 4,600 guests including:  
Veterans | Children | Seniors | Adults | Displaced



**Average Monthly Income: \$1,300**



## GRASSROOTS GROCERY



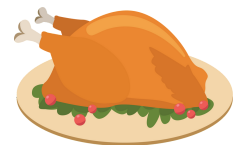
12K Grocery Visits



100+ Emergency Boxes Distributed



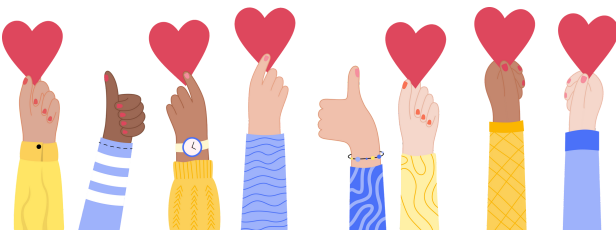
\$2.3 Million Saved by Grocery Members



900 Holiday Meal Boxes Distributed

"We are able to get fresh produce and other healthy selections of food that would otherwise be too expensive on a regular basis" - Grassroots Grocery Member

In a survey conducted by FeedNC, 90% of members stated that their worry and/ or stress levels have improved while enrolled in FeedNC Programs.



## VOLUNTEERING

# of Volunteers in 2022: 1,800

Total # of Volunteer hours: 37,000

\$1.1 Million Saved Through Volunteering



Graduates Employed



Students Graduated



Graduates Increased Annual Income



Community Partners



100% Retained Employment



## WORKFORCE DEVELOPMENT PROGRAM



## FOOD RESCUERS



1.4 Million Pounds of Food Rescued through Partnerships with Grocery Stores, Farms, and Restaurants



\$2.35 Million Saved in Food Costs



## BUILDING A BIGGER TABLE

- Donoghue's Open Door Community Dining & Events will be Opening in 2023
- Mimi's Garden Will Allow Fruits, Veggies, and Flowers to Bloom to Support Guests



## PHYTO RX

IN PARTNERSHIP WITH HEALTHREACH CLINIC

- 100 Food Prescriptions Filled
- 92 Food Prescriptions Delivered



## DISPLACEMENT ASSISTANCE

- 50 Homeless Served
- 50+ Shower & Laundry Check-ins



## WINTER WONDERLAND

- 250 Children Served



## COMMUNITY CONNECTIONS

- 500+ Referral Inquiries
- 12 Partner Meetings